

Inspired Innovation with Premier®



Premier® Restorative Products

Every procedure you perform shapes your patients' impression of you. We've got you covered with solutions engineered to deliver reliable results. Every time.

Premier X5 Sectional Matrix System™ Reliability. Convenience. Value.

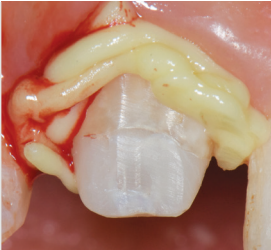


Learn more about Premier X5 Sectional Matrix System™ on page 11.

Traxodent®

Hemodent® Paste Retraction System

Photos courtesy of
Dr. Yue Weng Cheu, BDS, FRACDS



Traxodent applied



Post-op

Traxodent® the #1 choice¹ for hemostasis & retraction

Looking for a better solution that delivers quicker hemostasis and retraction...plus a better patient experience too? Award-winning* Traxodent is the #1 choice among dental professionals because it works fast, helps capture accurate impressions and rinses away easily. No film residue—no worries! Use it alone, with cord, or a retraction cap for greater gingival deflection. And since Traxodent doesn't irritate or discolor surrounding tissue, patients leave happier too. Predictable results and reduced chair time. Every time.



Only Traxodent delivers...

- ✓ Effective hemostasis & retraction – *predictable results and accurate impressions*
- ✓ Fast and easy handling – *works within 2-3 minutes*
- ✓ Rinses clean with no residue – *no interference with future bonding & cementation*



#1
Retraction
Paste¹

Ergonomic,
autoclavable unit dose
syringe dispenser

Sleek syringe with bendable tips

View online tutorial at premierdentalco.com

*Traxodent is the winner of the Dental Product Shopper 'Best Product' award for 2018. / 1. SDM Northcoast, North America 2021.

Ordering Information

- 9007094 Traxodent Unit Dose Pack
Contains: 24 capsules
- 9007089 Unit Dose Syringe Dispenser (3)
- 9007091 Traxodent Value Pack
Contains: 25 syringes and 50 tips
- 9007093 Traxodent Starter Pack
Contains: 7 syringes and 15 tips
- 9007092 Applicator Tips (50)

Premier® Retraction Caps

Anatomic formed cotton caps work synergistically with Traxodent to quicken and assist retraction and hemostasis.

- ✓ Easily guides Traxodent into the sulcus
- ✓ Compression assists and quickens hemostasis
- ✓ Cotton absorbs fluids
- ✓ Anatomic form allows easy placement

- 9048251 Size 1 - Small (120)
- 9048253 Size 3 - Medium (120)
- 9048255 Size 5 - Large (60)
- 9048260 Assorted - (15) #1, (15) #3, (30) #5



Routine Hemostasis



Old restoration is removed then Traxodent is placed.



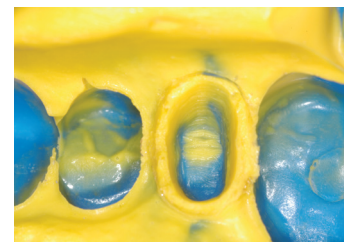
Rinse after 2 minutes. Bleeding is stopped and field is isolated.

Photos courtesy of Richard H. Nagelberg, DDS, PC

Crown and Bridge with Retraction Cap



Syringe Traxodent and place retraction cap on prep; have patient bite down on cap for 2 minutes.



Tooth is prepared for a clean impression.

Photos courtesy of Dean Ellledge, DDS, MS

Crown and Bridge with Retraction Cord



A single retraction cord is packed around the preps.



Place Traxodent over the cord. Wait 2 minutes.

Photos courtesy of Dean Ellledge, DDS, MS

Loose Tissue



Cord is placed.



Place retraction cap on prep; have patient bite down on cap for 2 minutes.



Impression with well-defined margins

Photos courtesy of William Crinzy, DDS, MS

IntegraPost®

Ultra-passive Integrating Core Retainer



- ✓ **Safe and Secure**
The IntegraPost features an innovative round Flow-Thru-Head® and a parallel passive design to optimize the adhesive buffer zone, conserve tooth structure and minimize stress.^{2,3,4}
- ✓ **Balances Strength with Elasticity**
Made from bio-compatible titanium alloy, IntegraPost is stronger than resin fiber, yet more elastic than stainless steel.⁵
- ✓ **Easy to Use**
Five post sizes make post selection a simple process. The unique post carrier facilitates handling.

In a ADA Professional Product Review on Endodontic Posts, which included metal, fiber and a ceramic post,

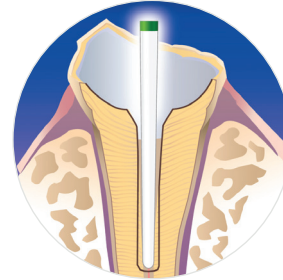
IntegraPost received the highest laboratory rating of 92% with a buyer's satisfaction of excellent!⁶

IntegraPost Refills (10 each)	3001301	IP Carrier
3001105 Size 3	3001305	IP Probe
3001110 Size 4		
3001115 Size 4.5		
3001125 Size 5		
3001130 Size 6		

2-5. Full bibliography available. / 6. American Dental Association Professional Product Review™ Publication by the ADA Council on Scientific Affairs, Vol. 1, Spring 2006. / IntegraPost designed by Endodontist, Dr. Phil Klein.

Cure-Thru® IntegraPost®

Light-transmitting Zirconia Glass Fiber Post



- ✓ **Safe and Simple to Use** – Composite Zirconia Glass Fiber composition won't fracture root and provides easy non-traumatic removal.
- ✓ **Aesthetic** – White color of post guarantees no grey shadow or show through.
- ✓ **Strong and Flexible** – Elastic modulus and flexural strength more like tooth structure allowing the post to respond like the tooth to traumatic stresses. (E-modulus 52 GPa/Flexural Strength 1650 MPa)
- ✓ **Factory Silanated for Secure Adhesion** – Post is chemically treated to bond with both resin cement and composite core build-up material.
- ✓ **Light Transmitting** – Photo curing through the post assures complete polymerization of cement around and down the post length.
- ✓ **Four Color Coded Post Sizes** – Multiple sizes for easy fit in all teeth and canal space. Color coding make size selection easy.
- ✓ **Tapered Tip Design** – Parallel body with slightly tapered tip conforms to apical root anatomy for safe and effective adaptation of post.



Refills (10 pack)		
3001610	Size 4	(red)
3001611	Size 4.5	(purple)
3001612	Size 5	(blue)
3001613	Size 6	(green)



Non-impregnated
Knitted Weave

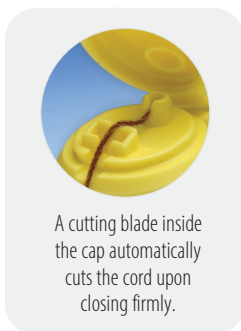
Knit-Pak™

Knitted Retraction Cord

Use in combination with Hemodent® or Traxodent® for tissue displacement and hemostasis.

- ✓ Absorbent knitted cotton can take in an abundant amount of hemostatic solution
- ✓ Compacts under pressure, making it easier to pack
- ✓ Will not get entangled in a bur
- ✓ Measures 100 inches / 254 cm

	Size	Color
9007551	000	Green
9007552	00	Brown
9007553	0	Purple
9007554	1	Blue
9007555	2	Orange
9007556	3	Yellow



A cutting blade inside the cap automatically cuts the cord upon closing firmly.



Impregnated
Knitted Weave

Knit-Pak+™

Impregnated Knitted Cord

Unique Knitted Microfiber with Superior Absorbency

Knit-Pak+ is knitted impregnated retraction cord manufactured from unique microfibers.

- ✓ Aluminum chloride impregnated cord (AlCl₃·6H₂O)
- ✓ High durability and retention properties
- ✓ Resists fraying and easily packs into sulcus
- ✓ Measures 100 inches / 254 cm

	Size	Color
9007560	000.0	Dark Green
9007561	000	Green
9007562	00	Brown
9007563	0	Purple
9007564	1	Blue
9007565	2	Orange



Hemodent®

Buffered Aluminum Chloride Hemostatic Solution

- ✓ Effectively stops minor gingival bleeding
- ✓ Epinephrine-free to avoid cardiac reactions
- ✓ Stable and offers a long shelf-life



9007071	10cc bottle
9007072	20cc bottle
9007073	40cc bottle

IntegraBond™

Universal (5th gen) Adhesive System



Clinically proven IntegraBond⁷⁻¹⁵ - provides outstanding performance for all restorative challenges!

- ✓ Offers outstanding shear bond strength to all popular light, dual- or auto-cure composites.



Use IntegraBond after acid-etching.

3001421	IntegraBond Adhesive Kit Contains: 4ml IntegraBond, 4ml Auto-Cure Activator, (2) 1.2ml Premier Etch Syringes, 50 Microbrushes, 20 Disposable Etch Tips, Mix Wells
3001411	IntegraBond - 7ml
3001412	Auto-Cure Activator - 7ml for use when light-curing is not possible
3001413	IntegraBond - 4ml

7-15. Full bibliography available.

Premier® Universal Primer

Zirconia and Glass Ceramics, Metal and Composite Primer



- ✓ Ideal retention for zirconia, alumina, metal, glass ceramics + composite materials
- ✓ Dual coupling agents provides versatility and work with all substrates
- ✓ Easy to use – just apply, wait 60 seconds, and dry
- ✓ No pretreatment of restoration required
- ✓ Can be used with adhesive and self-adhesive resin cement to achieve maximum bond strength for cases that require additional retention (e.g. short and/or over tapered preparations).



3001568	5ml bottle
---------	------------

CompCore™ AF

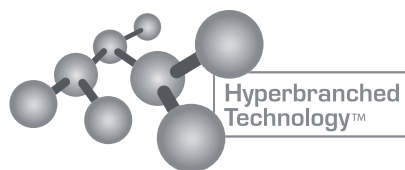
Dual-Cure Composite Core Build-up Material

Faster & stronger

A better core experience!

Build cores with confidence! CompCore™ AF resin composite is easy to place, shape and finish. The composite cuts like dentin with excellent visibility on radiographs while its superior mechanical properties and fluoride release deliver long-term clinical success.

- ✓ Outstanding handling – *ideal viscosity with excellent adaptation*
- ✓ Optional dual-cure – *chemical or fast light-curing in just 30 seconds*
- ✓ Superior mechanical properties – *long term clinical success*
- ✓ Minimum shrinkage of < 2.0% – *for vital and endodontically-treated teeth*



Hyperbranched
Technology™



CompCore™ AF SyringeMix STACK: 9g Automix Syringes/Dual-Cure

- 3001512 SyringeMix STACK / Shade White
- 3001513 SyringeMix STACK / Shade A3
- 3001514 SyringeMix STACK / Shade Blue

Contains: two 9g automix syringes, 15 mix tips, 15 standard and 10 extra-fine intraoral tips.

CompCore™ AF STACK 50g Automix Cartridge Intro Kit

- 3001430 Shade White
- 3001431 Shade A3

Contains: 50g cartridge of CompCore AF Dual-Cure, 4ml bottles of IntegraBond™ and Auto-cure Activator, Type 25 applicator gun, 25 mix tips, 25 intraoral syringe tips

Refill Kit

- 3001432 Shade White
- 3001433 Shade A3

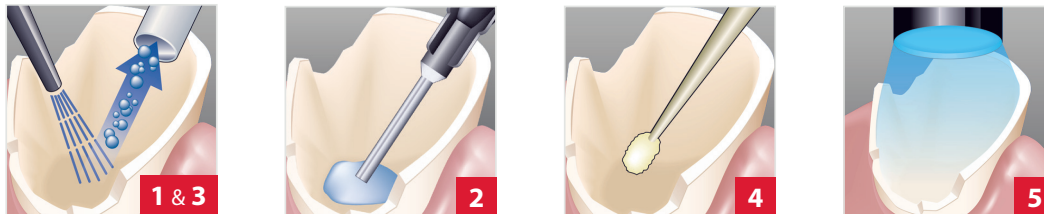
Contains: 50g cartridge of CompCore AF Dual-Cure, 25 mix tips, 25 intraoral syringe tips

Accessories

- 3001418 SyringeMix Mix-Tips & Intraoral Tips (35 each)
- 3001468 SyringeMix Extra-Fine Intraoral Tips (50)
- 3001416 Applicator Gun Type-25
- 3001417 Cartridge Mix-Tips & Intraoral Tips (35 each)

Bonding Agent

(use only bonding agents compatible with dual-cure composites, such as IntegraBond™)



1. Clean and dry prepared tooth surface.
2. Apply 37% phosphoric acid to the cavosurface for 10 to 15 seconds.
3. Rinse and dry cavo surface, do not desiccate the tooth.
4. Apply first coat of IntegraBond™ on prepared cavosurface. Allow to sit for 15 seconds, and then air dry. Apply 2 to 3 more coats; without waiting, dry again after last application.
5. Light-cure for 20 seconds.

Core Build-up



1. Bleed syringe. Assemble intraoral tip to mix-tip, attach to syringe and bleed tip.
2. Place intraoral tip into the base of the prepared tooth and dispense. Let material rise around the tip while withdrawing to eliminate air bubbles.
3. Light-cure for 30 seconds. If the core is larger than 8mm, light-cure for at least an additional 10 seconds.
4. Check for complete hardness. The preparation can be finished immediately with a Two Striper® bur. Alternately, the core can be chemical-cured, final set-time is 4.5 minutes.



Now in Clear Shade!

NexTemp®

Non-Eugenol Temporary Resin Cement

Your go-to temporary cement

Stays Put, Removes Easily

NexTemp is the reliable temporary cement you can count on. That's because NexTemp creates an excellent marginal seal with firm retention to help prevent premature dislodgment or microleakage.

What's more, NexTemp is the only eugenol-free resin cement containing potassium nitrate, chlorhexidine and fluoride – which studies show help mitigate post-op sensitivity.

- ✓ Temporary restorations stay put – *yet can be easily removed*
- ✓ Eugenol-free – *no interference with definitive resin cementation*
- ✓ Proprietary formula – *studies show ingredients help prevent sensitivity.*¹⁶
- ✓ Affordably priced – *good for your bottom line*
16. Data on file



Opaque shade

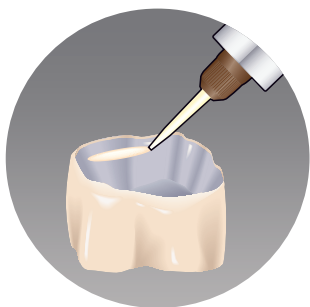
3001470 Bulk pk.: 4-5ml automix syringes

3001471 Standard pk.: 1-5ml automix syringe, 10 mix tips

Clear shade

3001473 Bulk pk.: 4-5ml automix syringes

3001472 Standard pk.: 1-5ml automix syringe, 10 mix tips



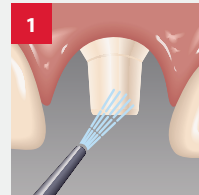
Greater Retention, Less Cement!

Just dispense a small bead of cement around the inside margin.

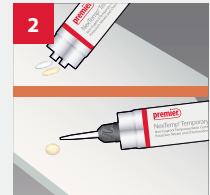
*"Best Products of the Year"****



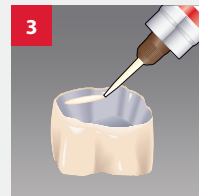
Premier® NexTemp® Temporary Cement is easy to use



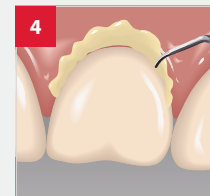
Dry and isolate the prepared tooth.



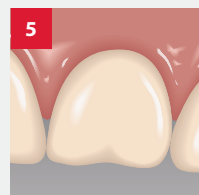
Bleed the syringe. Mount a new automix dispensing tip and bleed the syringe again.



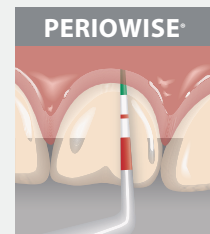
Dispense a small bead of cement around the inside margin.



Seat the temporary and hold in place. In approximately 2 minutes, excess cement reaches a distinct gel phase and can be removed safely.

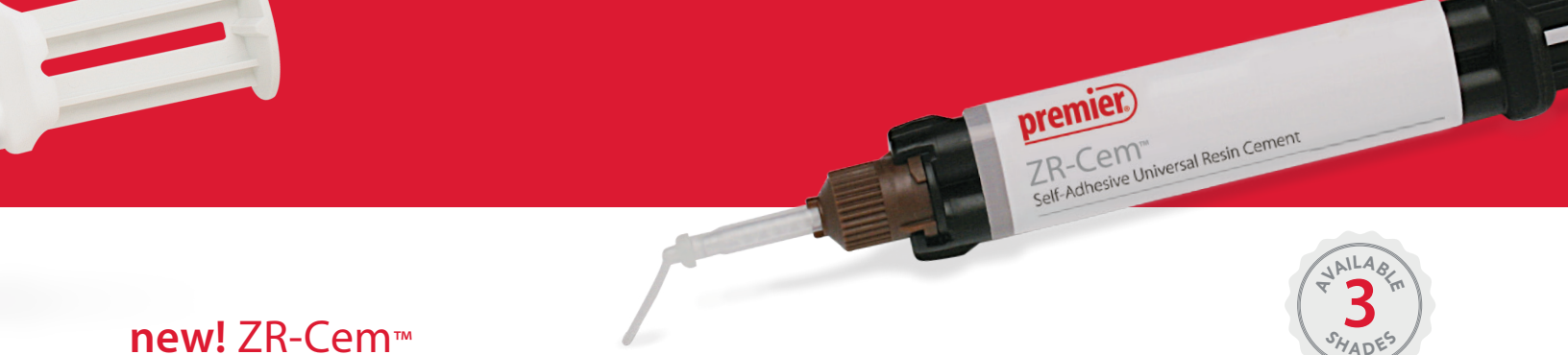


Final set occurs between 4-5 minutes after seating of temporary restoration.†



Use a PerioWise® Periodontal Probe for post-treatment periodontal evaluation.

*An independent non-profit dental education and product testing foundation, December 2006 & 2007 / †Final set time is determined intraorally. Ambient set times vary and are not representative of clinical conditions.



new! ZR-Cem™

New ZR-Cem™ is an innovative self-adhesive universal resin cement specially formulated for zirconia restorations. Dual-cured ZR-Cem enables a strong bond to all ceramic materials, dentin and enamel—ensuring superior retention and marginal integrity. And unlike other cements, ZR-Cem’s BPO/amine-free initiation system translates to lasting color stability.

Latest Technology = Better Patient Experience

- ✓ Innovative MDP formula enhances adhesion and bond to zirconia substrates
- ✓ Lasting color stability
- ✓ Virtually no post-operative sensitivity ensures patient comfort

Easy to use

- ✓ No pre-treatment is necessary, just dispense the cement and seat the restoration
- ✓ Optimal viscosity, easy handling and a fast & easy clean-up
- ✓ Room temperature storage – no need for refrigeration



Standard Pack

1 - 8g syringe, 10 mix-tips and 10 intraoral tips

3001560 Shade Opaque White

3001561 Shade A2

3001562 Shade Translucent

Refill Tips

3001418 35 mix-tips & 35 intra-oral tips

Light cure

2-3 seconds tack cure - easily remove excess cement

For high-translucency zirconia and other light-transmittable restorations (material thickness ≤ 2.5mm), light cure all surfaces including margins for 20 seconds to accelerate final set.

Chemical cure

72°F (22°C) temperature

Working time: 1.5 - 2.5 minutes.

Higher temperatures accelerate set.

98.6°F (37°C) temperature

Gel phase: approximately 1-1.5 minutes

Final set: 3.0 - 4.0 minutes.

Higher temperatures accelerate set.

Physical Properties

Compressive strength: 150 MPA

Flexural strength: 100 MPA

Film thickness: 10 um

Radiopacity: 250% Al

Shelf life: 2 years



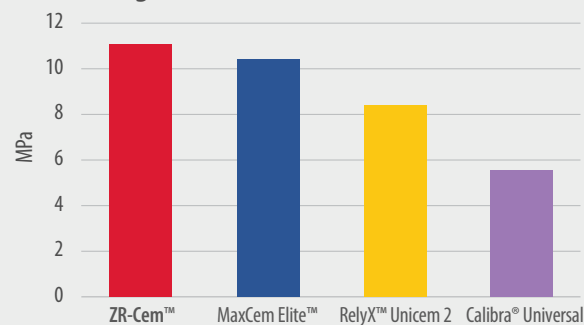
3-second tack cure



Easy clean-up

Photos courtesy of Timothy M. Bizga, DDS

ZR-Cem: superior bond strength vs. other leading self-adhesive cements to zirconia†



MaxCem Elite, RelyX Unicem 2 and Calibra Universal are not trademarks of Premier Dental.
† Latta, M. Creighton University School of Dentistry Study 2019.



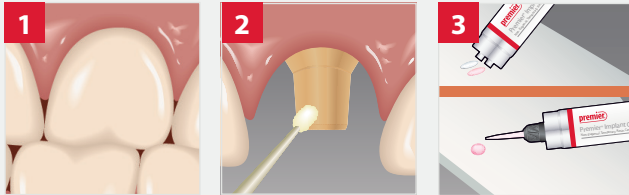
Premier® Implant Cement™ Plus

The ultimate solution for implant crown cementation.

- ✓ Secure retention – *for long-lasting hold*
- ✓ Retrievable – *without damage to the crown, abutment or implant*
- ✓ Easy to use – *no etch, primers or adhesive required*
- ✓ Unsurpassed radiopacity* – *excellent visibility on radiographs*



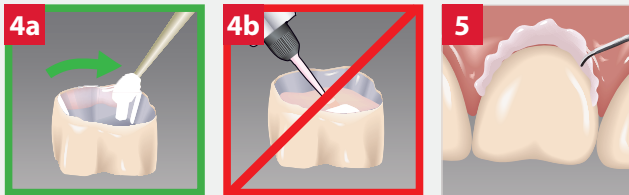
Premier® Implant Cement™ is easy to use



1 Check the fit. Complete all finishing procedures.

2 Rinse and dry abutment and interior of restoration.

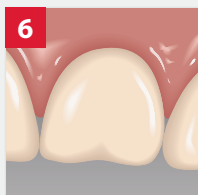
3 Bleed syringe. Mount new automix tip and then bleed the syringe again. This assures proper flow of base and catalyst.



4a Using a microbrush, place a thin film of cement along the inside wall of the cervical third, making sure to completely coat the margin with cement. You have 1.5 minutes of working time at room temperature.

4b Excess cement should be avoided. Too much cement can cause future restoration retrieval to be difficult to impossible.*

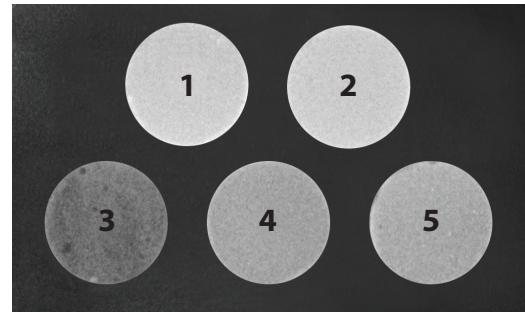
5 Firmly seat the crown and hold in place until initial set (gel phase) occurs in 2–2.5 minutes. Safely remove excess cement before final set. It is imperative to remove all excess cement.



6 Final cement is 4 - 5 minutes, intraorally.

*Any excess cement (regardless of chemical make-up or brand) that remains in the sulcus around an implant could lead to peri-mucositis, peri-implantitis or implant failure if not removed immediately.

Premier Implant Cement Plus offers unsurpassed radiopacity* with excellent visibility on radiographs.



- 1 Premier® Implant Cement™ Plus - Shade Original (Pink)
- 2 Premier® Implant Cement™ Plus - Shade White
- 3 Improv®
- 4 Implantlink® Semi Xray
- 5 Retrieve™ DC

*As compared to other implant cements. Improv, Implantlink Semi Xray and Retrieve DC are not trademarks of Premier® Dental Products Co.

Standard Pack

- 1-5ml Automix Syringe, 10 Mix Tips
- 3001550 Shade Original (Pink)
- 3001551 Shade White

Value Pack

- 3-5ml Automix Syringes, 25 Mix Tips
- 3001555 Shade Original (Pink)
- 3001556 Shade White

Accessories

- 3001451 Automix Dual-barrel Syringe Tips (25)

Premier® Implant Scalers

Made from graphite reinforced resin that will not scratch implant surfaces.

Premier PerioWise®

- ✓ Easy to read
- ✓ Safe around implants
- ✓ Autoclavable

PerioWise® Probe 3-5-7-10mm

- 9006107 (3-pack)
- 9006102 (6-pack)
- 9006105 (12-pack)

PerioWise® Probe 3-6-9-12mm

- 9006108 (3-pack)
- 9006104 (6-pack)
- 9006106 (12-pack)



Universal Implant Scaler

- (Columbia 4L/4R)
- 9061401 (2-pack)
- 9061400 (5-pack)

137 Implant Scaler

- (Anterior)
- 9061421 (2-pack)
- 9061420 (5-pack)

Facial Implant Scaler

- (Goldman-Fox 5)
- 9061402 (2-pack)
- 9061403 (5-pack)

204 Implant Scaler

- (Posterior)
- 9061423 (2-pack)
- 9061422 (5-pack)

Spot-On™ Etch

37% Phosphoric Etch Gel

Spot-On™ Etch is a 37% high viscosity phosphoric etch gel for all your routine and selective-etch procedures. It's designed with enhanced viscosity that will prevent it from dripping or slumping. Spot-On Etch easily flows through a small applicator tip, washes off readily and resists drying out.

- ✓ Ideal for routine etching and selective-etch procedures
- ✓ Blue color provides a strong contrast to enamel and dentin
- ✓ No slump formula
- ✓ Easy handling
- ✓ Rinses clean without leaving residue



3001460 Spot-On™ Etch Bulk
 One 12g jumbo filled syringe with luer lock adapter
 Ten 1.2ml empty syringes
 Fifty 1.2ml disposable applicator tips

3001461 Spot-On™ Etch Intro
 Five 1.2ml filled syringes
 Twenty bent disposable applicator tips



Spot-On™ Etch no-slump viscosity will stay put. Only etch the areas you desire!

Spot-On™ Etch clinical image courtesy of Shalom Mehler DMD, Teaneck, NJ.

Premier® Etch

37% Phosphoric Acid Dentin/Enamel Etch Gel

Premier® Etch contains phosphoric acid for etching tooth enamel and dentin when preparing surfaces for the application of composites.



3001422 37% Dentin/Enamel Etch Kit
 Contains: one 12g jumbo syringe, with luer lock adapter, ten empty 1.2ml syringes and 50 disposable applicator tips for the ten 1.2ml syringes

Premier X5 Sectional Matrix System™ Is Different

Reliability. Convenience. Value.

An innovative, superior option is here!

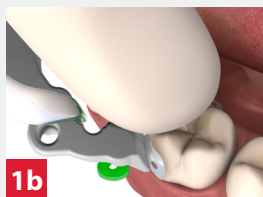
Introducing the Premier X5 Sectional Matrix System™ - a complete, high-quality, 5-component sectional matrix system designed to achieve accurate Class 2 composite restorations with smooth contours and consistent interproximal contacts.

Made from a proprietary resin, the X5 ring delivers comparable separation strength to metal rings and provides exceptional value—especially when switching from expensive metal ring systems. The X5 system includes 10 rings (plus refill bags of 35 available) so you're assured a quick set up—no waiting around for sterilized metal rings or worry about corrosion, damaged or lost expensive metal rings.

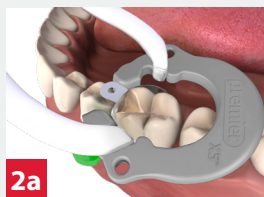


1a
Placement of Matrix. Select matrix based on the approximate occlusogingival height. Place prongs of Pin-Holder through corresponding holes in the matrix with the gold side visible to easily disengage the instrument once the matrix is in place.

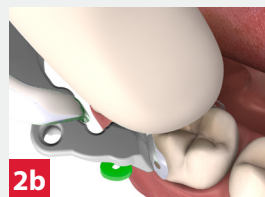
When placing the matrix before the wedge, place a finger at the occlusal aspect of the matrix to hold it in place & prevent it from dislodging, or use Pin-Holder to secure matrix, proceed with wedge placement.



1b
Fold the matrix tab towards you so you can insert the matrix apically into the gingival crevice & adjust matrix to the proper height to obtain ideal benefit from the contour of matrix.



2a
Placement of Premier X5™ Ring. Use the ring forceps to grasp and slightly expand the ring. Carefully place the ring as low as possible with the tines of the ring close to the gingival margin and straddling the wedge(s).



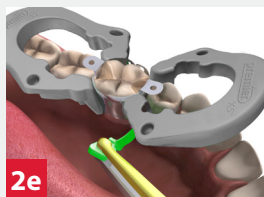
2b
When you are ready to release the ring from the Ring Forceps, place your finger and press down on the matrix tab to prevent any unwanted movement.



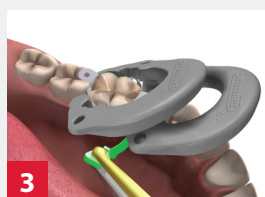
2c
Premier X5™ Ring in the ideal position from a buccal view.



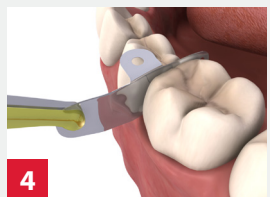
2d
Dual-Wedging: The Premier X5™ system allows for the insertion of a second wedge, to prevent any leakage, to be placed from the opposite side without removing the ring. The second wedge should be inserted underneath the first wedge.



2e
Mesial & Distal Ring Placement: The ring may be placed mesially and/or distally for better access such as the case with MOD restoration.



3
Dual-Mesial Ring Placement: Premier X5™ ring may be stacked over each other for better access such as the case with MOD restoration.



4
Premier X5™ Removal: Remove ring using Ring Forceps, remove wedge(s) using Pin-Holder, separate matrix from composite using a thin bladed instrument by pushing the instrument into the embrasure. Fold matrix wings backwards and cure composite again from buccal and lingual surfaces. Remove matrix with Pin-Holder; grip one of the matrix holes with the Pin-Holder and gently wiggle the matrix out.

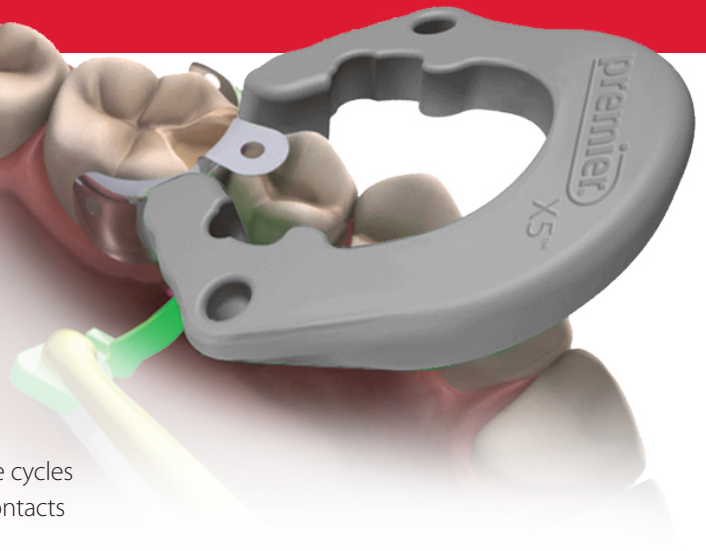
If needed, you may use another Pin-Holder on the "opposite" side of the matrix and move the matrix back and forth, or upward, until loose.

Perform Restoration: Proceed to fill entire cavity preparation with desired composite material.

There's never been a better time to make the switch to X5 and save without compromising quality results.

5 Reasons to Choose X5

- ✓ Proprietary, strong, reusable resin rings – Reusable up to 5 autoclave cycles
- ✓ Anatomically-shaped matrices ensure proper contouring + tight contacts
- ✓ Compatible with other system's wedges and matrices
- ✓ Easy to use compared to Tofflemire-type retainers
- ✓ Priced right for exceptional value



9061150 X5 Intro Kit

Contains:

- (1) Matrix Pin Holder
- (1) Matrix Ring Forceps
- (10) Matrix Rings (gray)
- (25) each Wedges Matrices
- Small (yellow) 3.5mm
- Medium (green), 4.5mm
- Large (blue) 5.5mm
- 6.5mm

9061155 X5 Essential Kit

Contains:

- (10) Matrix Rings (gray)
- (25) each Wedges Matrices
- Small (yellow) 3.5mm
- Medium (green), 4.5mm
- Large (blue) 5.5mm
- 6.5mm



Reorder

-  9061190 X5 Matrix Ring (35)
-  9061170 X5 Wedge - Small (yellow) (100)
-  9061171 X5 Wedge - Medium (green) (100)
-  9061172 X5 Wedge - Large (blue) (100)
-  9061160 X5 3.5mm Matrix (25)
-  9061161 X5 4.5mm Matrix (80)
-  9061162 X5 5.5mm Matrix (80)
-  9061163 X5 6.5mm Matrix (80)



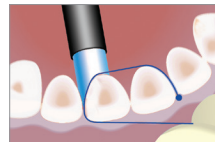
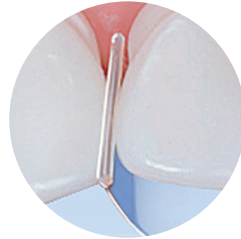
- 9061180 Matrix Pin Holder
- 9061181 Matrix Ring Forceps

Stop Strip

Anterior Bands with Integrated Stopper

- ✓ Turns a three-handed procedure into a two-handed one
- ✓ Light-cure Class III and IV restorations with ease

9061380 8mm (red) (100)
9061375 10mm (blue) (100)



Unique integrated stopper secures the matrix band between adjacent teeth.



Sycamore Wood Wedges

The Original Anatomically Carved



- ✓ Round tip easily passes over gingiva
- ✓ Concave sides conform matrix band to tooth's anatomy
- ✓ Square end is easily inserted and removed

Eight color-coded sizes (400 count)

9061109	Mini (Light Blue)	9061103	15 (Blue)
9061106	UT - Ultra Thin (Orange)	9061104	16 (Red)
9061100	13XT - Extra Thin (Neutral)	9061105	17 (Neutral)
9061101	13T (Green)	9061108	Assorted (UT, 13, 13T & 15)
9061102	13 (Yellow)		

Cure-Thru® Clear Cervical Matrices

Transparent Pre-contoured Matrix Forms

- ✓ Flexes to the exact contour of the tooth for dense restorations with excellent marginal integrity
- ✓ Compresses restorative material as you light-cure
- ✓ Helps eliminate air inhibited layer
- ✓ Reduces time to final polish

Available in boxes of 150

- 9061012 719CT
- 9061013 720CT
- 9061014 721CT
- 9061015 722CT
- 9061016 723CT
- 9061017 Anterior/Premolar
- 9061018 Molar/Universal
- 9061340 Positioning Instrument - double-ended, autoclavable
- 9061011 Assorted Box - Contains: 275 matrix forms, positioning instrument, gingival retraction instrument



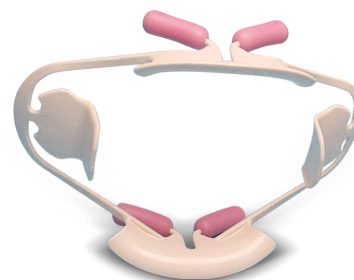
Actual Size



ComfortView® Lip & Cheek Retractor

- ✓ Retracts lips and cheeks for optimal buccal and gingival access
- ✓ Maximum visibility and patient comfort
- ✓ Suitable for use in diagnostic, preventative, therapeutic dental applications, in-office whitening, digital impression scanning and intra-oral photography
- ✓ Autoclavable, latex-free

- 9061381 Universal ComfortView Lip and Cheek Retractor
2 per box (white)
- 9061383 Small ComfortView Lip and Cheek Retractor
2 per box (blue)
- 9061382 ComfortView Refill Cushions
10 per pack



Pre-Contoured Metal Bands

- ✓ Anatomical shape achieves better contact points
- ✓ Ideal for large Class II restorations with incremental curing technique
- ✓ Finished edges ensure patient comfort
- ✓ Measures 0.035mm thickness

9061070 Box of 30



Triple Tray®

Proven Accurate in Over 100 Million Impressions

- ✓ Three techniques in one – *Saves time, money and materials.*
- ✓ Adaptable, ultra-thin webbing – *Provides accurate bite registration and low water sorption*
- ✓ Disposable – *No cleaning involved, aseptic*
- ✓ Seven configurations – *Designed to address all clinical cases*

- 1006203 Posterior - Box of 48
 - 1006243 Sideless Posterior - Box of 48
 - 1006283 Wide Body Posterior - Box of 48
 - 1006213 Anterior - Box of 35
 - 1006223 Quadrant - Box of 40
 - 1006253 Extended Quadrant - Box of 35
 - 1006273 Three-Quarter Arch - Box of 35
 - 1006233 Assorted - Box of 35
- Contains 5 each of designs listed above



18x winner!¹⁷



T-LOC™ Triple Tray®

Adhesive-free Dual-arch Impression Trays

- ✓ Patented adhesive-free design
- ✓ Easier handling
- ✓ Accurate bite
- ✓ Greater rigidity in posterior
- ✓ Ensure accuracy and save time

- 1006204 Posterior - Box of 35
- 1006214 Anterior - Box of 28
- 1006274 Three-Quarter Arch - Box of 22



7x winner!¹⁸

ZR-Cem™

Self-Adhesive Universal Resin Cement

See page 8.



NexTemp®

Non-Eugenol Temporary Resin Cement

See page 7.



Premier® Universal Primer

Zirconia and Glass Ceramics, Metal and Composite Primer

See page 4.



premier® Inspired solutions
for daily dentistry®



Premier® Dental Products Company • 1710 Romano Drive, Plymouth Meeting, PA 19462, USA

Phone 888-670-6100 • 610-239-6000 • Fax 610-239-6171 • premierdentalco.com • info@premierdentalco.com

17. 2003, 2004, 2006, 2007, 2008, 2009, 2010, 2011, 2012, 2013, 2014, 2015, 2016, 2017, 2018, 2019, 2020, 2021 Townie Choice Award, DentalTown Magazine.

18. 2007, 2008, 2009, 2010, 2011, 2012, 2013 Townie Choice Award, DentalTown Magazine.

©2022 Premier Dental Co. | All Rights Reserved

8610307 0322039 Rev13 NKP10M