

Greater comfort & control!



137 Anterior • 9061421 - 2 pack / 9061420 - 5 pack



204 Posterior • 9061423 - 2 pack / 9061422 - 5 pack



Facial (Goldman-Fox) • 9061402 - 2 pack / 9061403 - 5 pack



Universal (4L/4R) • 9061401 - 2 pack / 9061400 - 5 pack

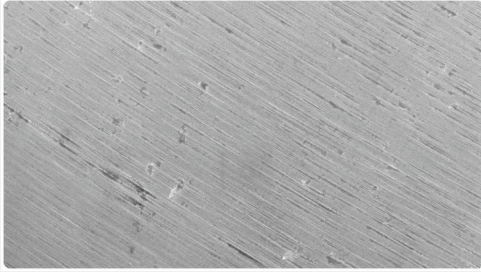
Premier® Implant Scalers

Engineered for reliable implant maintenance

Premier® Implant Scalers are made from fiber reinforced graphite that will not scratch implant surfaces. The tips are thin and sharp with well-defined edges. The graphite is strong yet slightly flexible, allowing the tips to access tight areas effectively and safely. The specially designed handle has textured grips and a larger diameter for greater comfort and control. Premier Implant Scalers can be reused and are autoclavable. Made in the USA

Premier® Implant Scalers

Implant surface after being scaled with Premier® Implant Scaler

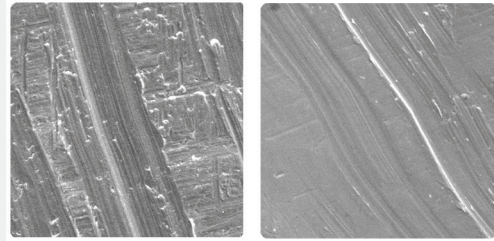


**The smooth abutment surface resists attachment of plaque and bacteria
Premier Implant Scaler (100um)**

- **Fiber reinforced graphite** – Will not scratch implant structures
- **Precisely engineered tips** – Thin and sharp with well defined edges, effective in removing plaque and calculus
- **Variety of styles** – For every use and preference
- **Specially designed handle, larger diameter and textured grips** - Greater comfort and control
- **Reusable** - Autoclavable (273°F / 134°C)

Premier Implant Scalers should not be resharpened.

Implant surface after being scaled with stainless steel and titanium scaler



Rough abutment surface can harbor plaque and bacteria

Stainless Steel Scaler (100um)

Titanium Scaler (100um)

Most titanium scalers tips are made from grade five titanium. Implant structures are made from titanium grades one through five, depending on the brand. The lower the titanium grade the softer the metal. Scaling with harder grade five titanium tips creates a substantial risk that some implant structures will be scratched.

new! Premier® Implant Cement™ Plus

Non-Eugenol, Temporary Resin Cement
for Implant Retained Crowns

- ✓ Easy to use – *no etch, primers or adhesive required*
- ✓ Gel stage in just 2 minutes – *excess easy to remove*
- ✓ Unsurpassed radiopacity – *excellent visibility on radiographs*
- ✓ Secure retention – *for long-lasting hold*
- ✓ Retrievable – *without damage to the crown, abutment or implant*
- ✓ Available in 2 shades – *white and pink*

Standard Pack

1-5ml Automix Syringe, 10 Mix Tips

3001550 Shade Original (Pink)

3001551 Shade White

Value Pack

3-5ml Automix Syringes, 25 Mix Tips

3001555 Shade Original (Pink)

3001556 Shade White



Unsurpassed Radiopacity*

premier® Inspired solutions
for daily dentistry®



Premier® Dental Products Company • 1710 Romano Drive, Plymouth Meeting, PA 19462, USA

Phone 888-670-6100 • 610-239-6000 • Fax 610-239-6171 • premierdentalco.com • E-mail: info@premierdentalco.com

*When compared to competitive implant cements – data on file

©2020 Premier Dental Co. | All Rights Reserved

8610423 0119060 Rev4 PDF